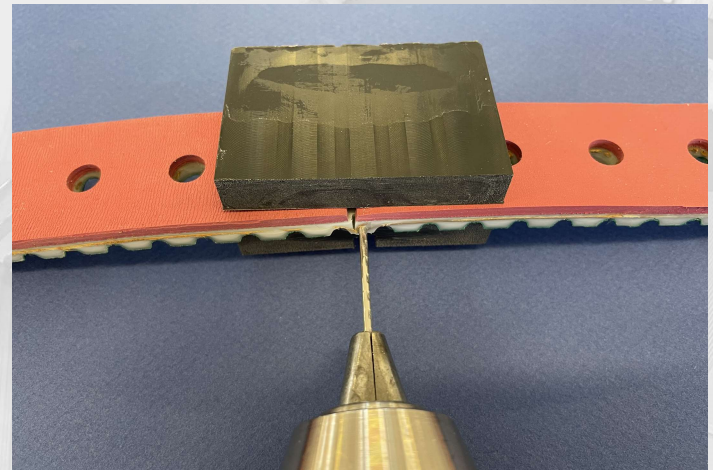
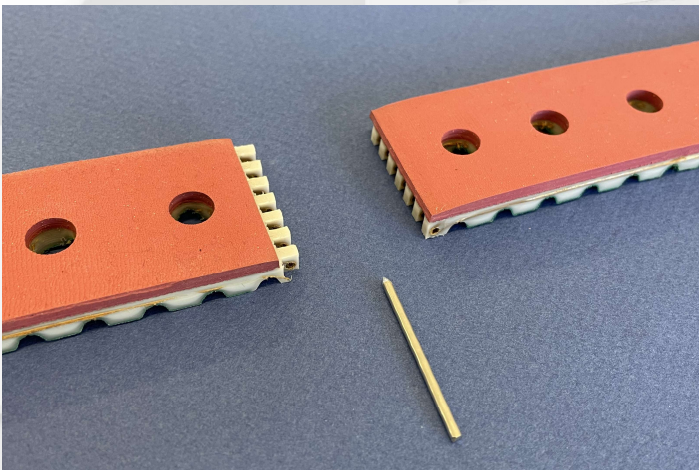
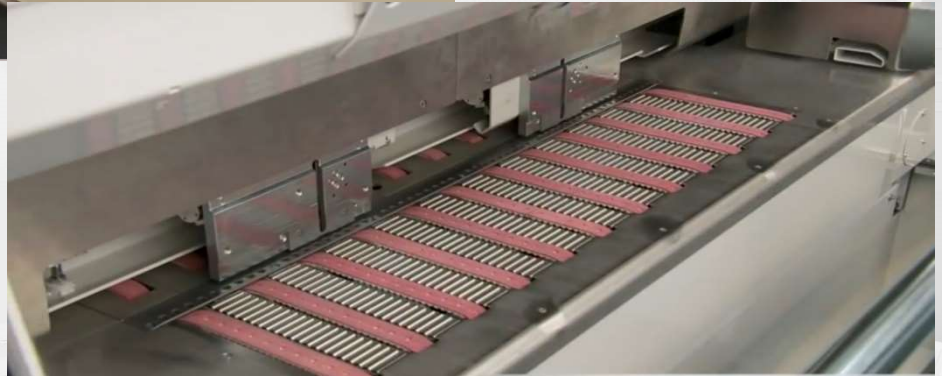


Feeder belts

32 AT10 PAZ 840mm + Holes + Rubber 3mm

Belt ERO Joint® HP with mechanical splice + assembly tool to simplify machine installation



- Green polyamide fabric on teeth (NT)
- 3mm natural red rubber coating 40 shore A (or white 45 Shore A)
- 35 holes \varnothing 8mm - 24 mm pitch
- Mechanical fastening system ERO Joint® HP
- Mounting tool + connecting pin + assembly instruction

- Delivery per set (24 pieces)

Assembly video:

